

# IHCP *banner page*

INDIANA HEALTH COVERAGE PROGRAMS

BR201937

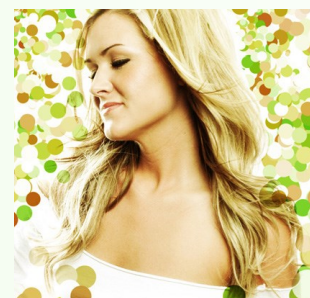
SEPTEMBER 10, 2019

## IHCP to remove age restriction from diagnosis code L21.0, and mass reprocess claims

Effective September 10, 2019, the Indiana Health Coverage Programs (IHCP) will remove the age restriction from coverage of International Classification of Diseases-10-Clinical Modification (ICD-10-CM) diagnosis code L21.0 – *Seborrhea capitis*. This restriction had applied to members 0-17 years of age. Other existing reimbursement guidelines for code L21.0 remain unchanged.

This change applies retroactively to claims with dates of service (DOS) on or after **January 1, 2016**. Fee-for-service (FFS) claims for treatment of dermatitis and billed with diagnosis code L21.0 may have denied inappropriately for explanation of benefits (EOB) 4030 – *The diagnosis given is not compatible with the member's age. Please verify and resubmit.*

The claim-processing system has been corrected. Claims with code L21.0 that denied for EOB 4030 during the indicated time frame will be mass reprocessed. Providers should see the reprocessed claims on Remittance Advice (RA) statements beginning October 16, 2019, with internal control numbers (ICNs)/Claim IDs that begin with 80 (reprocessed denied claims).



### QUESTIONS?

If you have questions about this publication, please contact Customer Assistance at 1-800-457-4584.

### TO PRINT

A [printer-friendly version](#) of this publication, in black and white and without photos, is available for your convenience.

### COPIES OF THIS PUBLICATION

If you need additional copies of this publication, please download them from the [Banner Pages](#) page of the IHCP provider website at [in.gov/medicaid/providers](http://in.gov/medicaid/providers).

### SIGN UP FOR IHCP EMAIL NOTIFICATIONS

To receive email notices of IHCP publications, subscribe by clicking the blue subscription envelope or sign up from the [IHCP provider website](#) at [in.gov/medicaid/providers](http://in.gov/medicaid/providers).

