

IHCP *bulletin*

INDIANA HEALTH COVERAGE PROGRAMS BT202254 JULY 19, 2022

IHCP updates FQHC and RHC encounter codes

Effective immediately, the Indiana Health Coverage Programs (IHCP) will include the Current Procedural Terminology (CPT^{®1}) and Healthcare Common Procedure Coding System (HCPCS) codes in Table 1 as valid federally qualified health center (FQHC) and rural health clinic (RHC) encounter codes. This update applies retroactively to claims with dates of service (DOS) on or after Jan. 1, 2022.

The claim-processing system has been updated to add the codes in Table 1 as valid FQHC and RHC encounter codes.

FQHC and RHC claims with DOS on or after Jan. 1, 2022, in Table 1 that denied for explanation of benefits (EOB) 6096 – *The CPT/HCPCS code billed is not payable according to the PPS reimbursement methodology* will be mass adjusted or reprocessed. Providers should see adjusted/reprocessed claims on Remittance Advices (RAs) beginning Aug. 17, 2022, with internal control numbers (ICNs)/Claim IDs beginning with 52 (mass replacements non-check related) or 80 (reprocessed denied claims).

The IHCP removed the nationally deleted codes in [Table 2](#) from the list of valid FQHC and RHC encounter codes. This change applies retroactively to claims with DOS after Dec. 31, 2021. This change will have no impact on previously adjudicated claims. The list of valid FQHC and RHC encounter codes is reviewed periodically to account for new and end-dated CPT and HCPCS codes, and is available on the [Myers and Stauffer website](#) at mslc.com/Indiana. If you have questions, contact Myers and Stauffer at (317) 846-9521.

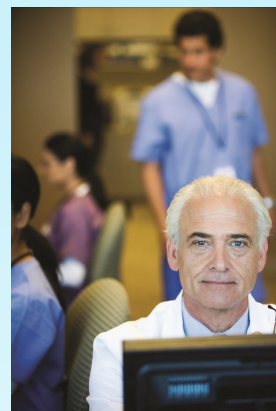


Table 1 – Procedure codes added as valid FQHC and RHC encounter codes, effective for DOS on or after Jan. 1, 2022

| Procedure code | Description |
|----------------|---|
| 42975 | Evaluation of sleep-disordered breathing by examination of upper airway using an endoscope |
| 94625 | Professional services for outpatient pulmonary rehabilitation, per session |
| 94626 | Professional services for outpatient pulmonary rehabilitation with continuous monitoring of blood oxygen, per session |
| D3911 | Intraorifice barrier |
| D3921 | Decoronation or submergence of an erupted tooth |
| D4322 | Splint - intra-coronal; natural teeth or prosthetic crowns |
| D4323 | Splint - extra-coronal; natural teeth or prosthetic crowns |
| D4910 | Periodontal Maintenance |
| D5227 | Immediate maxillary partial denture - flexible base (including any clasps, rests and teeth) |
| D5228 | Immediate mandibular partial denture - flexible base (including any clasps, rests and teeth) |
| D5765 | Soft liner for complete or partial removable denture - indirect |
| D9947 | Custom sleep apnea appliance fabrication and placement |
| D9948 | Adjustment of custom sleep apnea appliance |
| D9949 | Repair of custom sleep apnea appliance |

¹ CPT copyright 2022 American Medical Association. All rights reserved. CPT is a registered trademark of the American Medical Association.

Table 2 – Procedure codes no longer valid as FQHC and RHC encounter codes, effective for DOS on or after Dec. 31, 2021

| Procedure code | Description |
|----------------|--|
| D8050 | Interceptive orthodontic treatment of the primary dentition |
| D8060 | Interceptive orthodontic treatment of the transitional dentition |

QUESTIONS?

If you have questions about this publication, please contact Customer Assistance at 800-457-4584.

TO PRINT

A [printer-friendly version](#) of this publication, in black and white and without photos, is available for your convenience.

COPIES OF THIS PUBLICATION

If you need additional copies of this publication, please download them from the [Bulletins](#) page of the IHCP provider website at in.gov/medicaid/providers.

SIGN UP FOR IHCP EMAIL NOTIFICATIONS

To receive email notices of IHCP publications, subscribe by clicking the blue subscription envelope or sign up from the [IHCP provider website](#) at in.gov/medicaid/providers.

